



六联智能
SIXUNITED

Commercial Book

Z10 ID Series

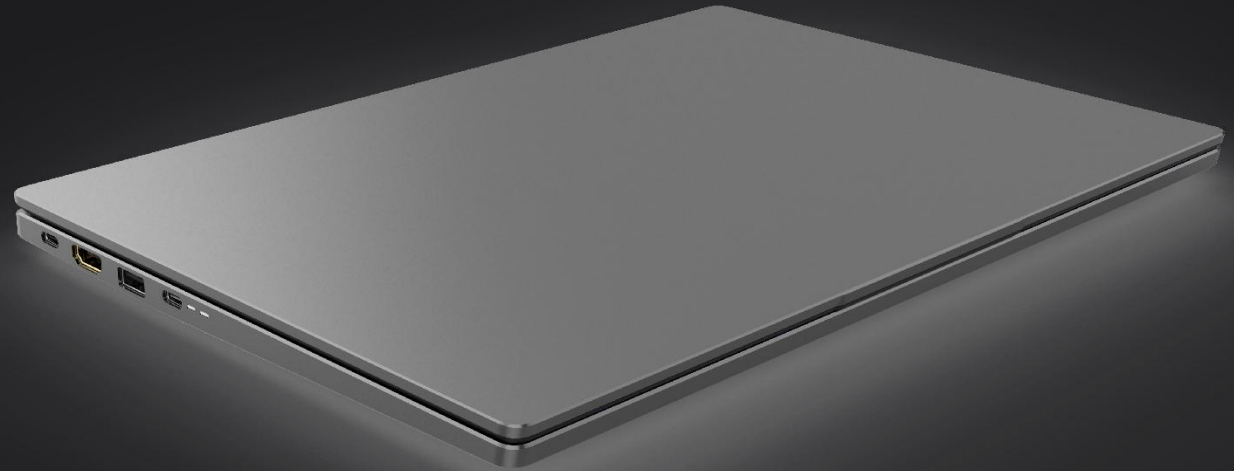
14" /16" /17.3"



Thin ~1.3kg*

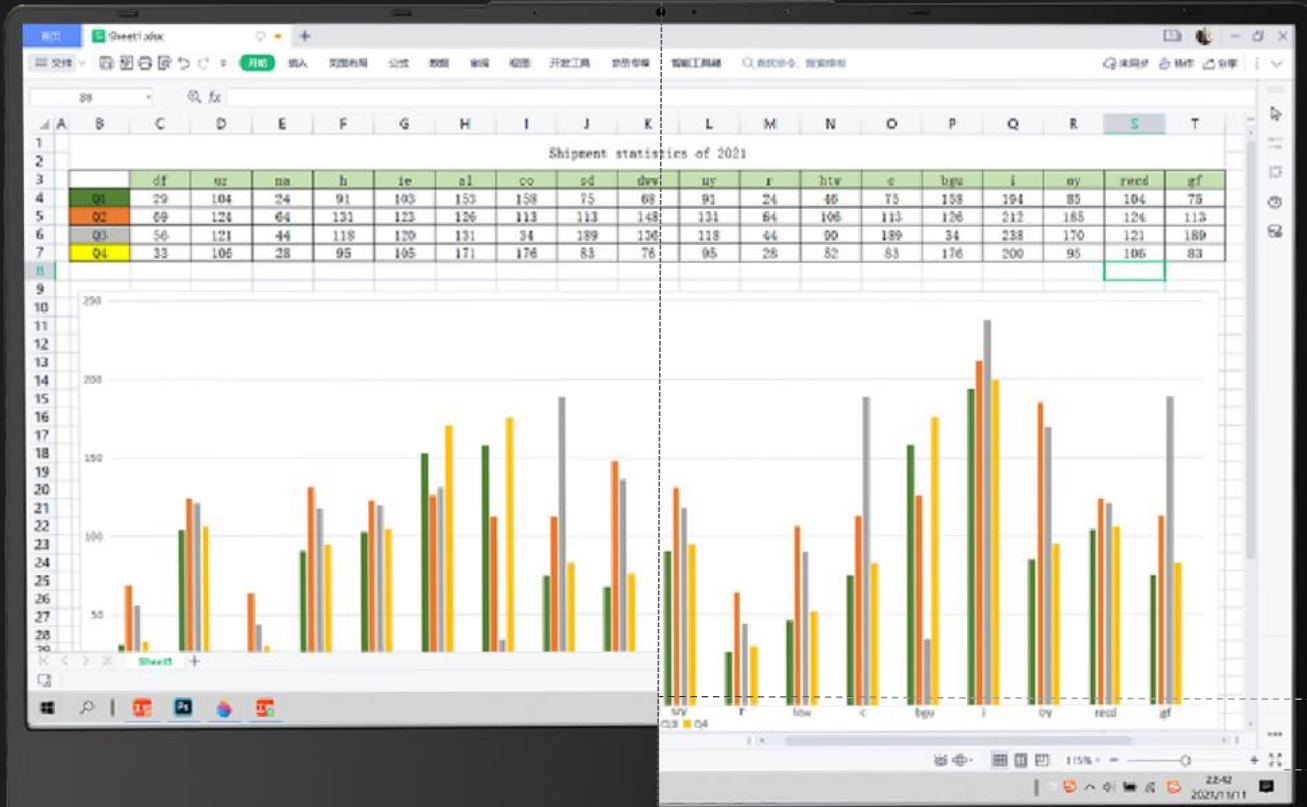


Light ~17.8mm*



A/D Metal, B/C Plastic

16:9



16:10

More 11% Visible space
Compared to 16:9
To raise productivity

11%



Privacy Camera Switch

AMOLED

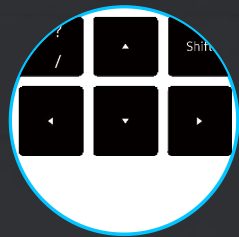
2880 x 1800
RGB 10 bit

AMOLED option for 14" / 16"



Contrast **Color** Keyboard

Ctrl + **S** to save your file at any time



Large size arrow keys



Caps lock LED



Open to 180°

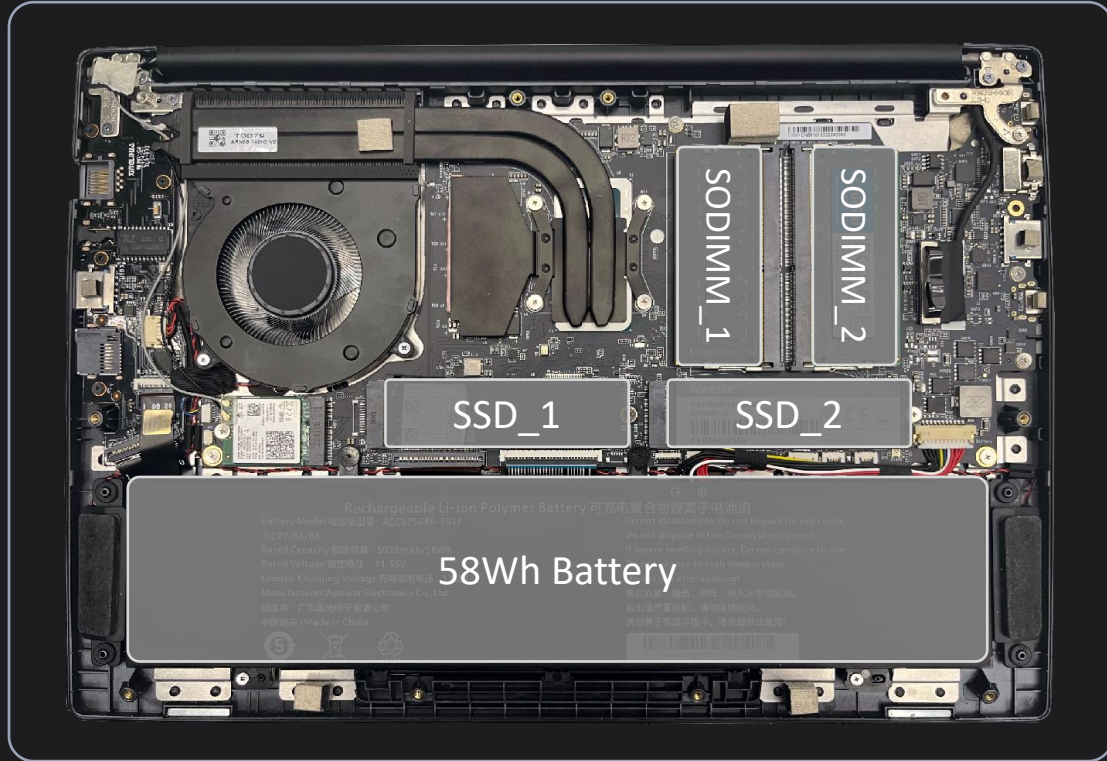


Rich I/O Ports

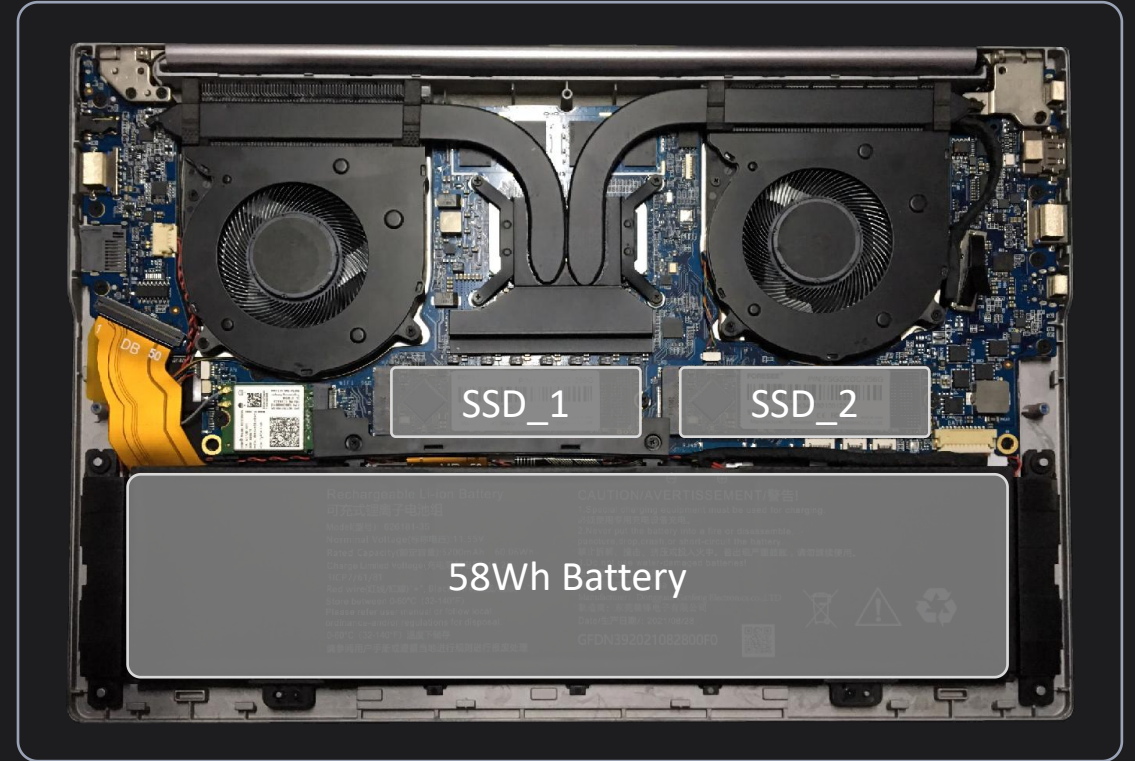


Flexible Configuration

xN59 Series
15W/ 28W thermal



xN39 Series
45W/ 54W thermal



Single Fan



2*SO-DIMM



2*M.2 2280 SSD



Dual Fan



DDR Onboard



2*M.2 2280 SSD

Family ID Serieese

14"

16 : 10



xN39/ xN59-140H(2)-YD

16"

16 : 10



xN39/ xN59-160H-YD

17.3"

16 : 9



xN39/ xN59-173H-YD

Family ID Serieese

14"
16 : 10

16"
16 : 10

17.3"
16 : 9

4.39m

5.16m

6.28m

6.77mm

6.85mm

8.85mm



86%
Screen to body ratio

89%
Screen to body ratio

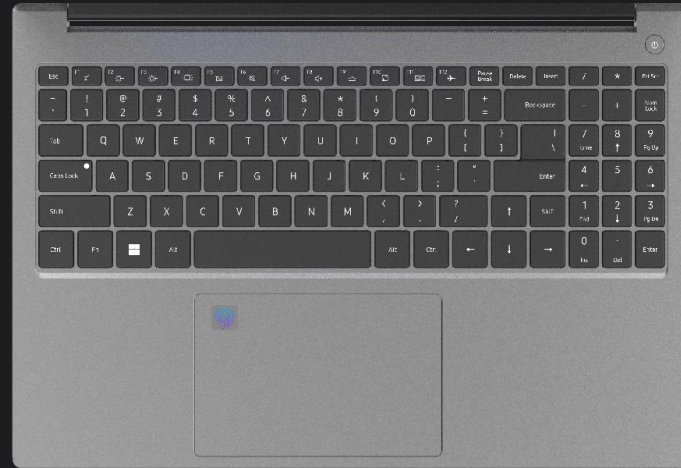
85%
Screen to body ratio

Family ID Serieese

14"



16"

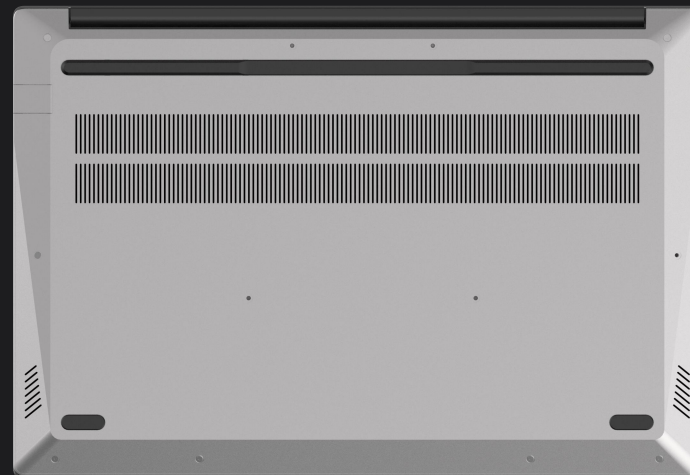
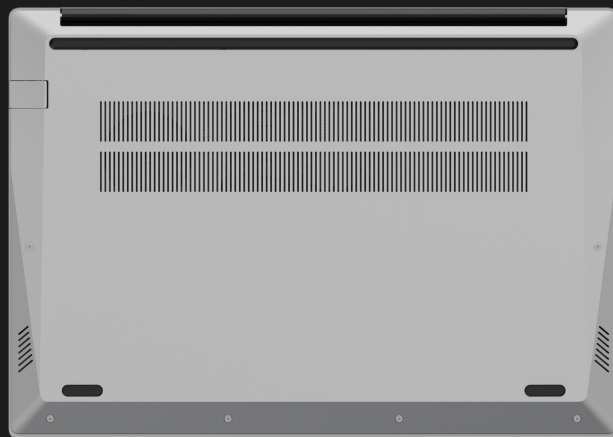


3-row number key

17.3"



4-row number key



Family ID Serieese

DB Side



Micro SD

USB option

14"

MB Side



H=17.8mm (without camera switch)
or 18.1mm (with camera switch)

16"



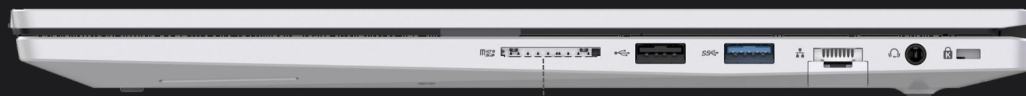
SD

RJ45 option



H=17.9mm

17.3"



SD



H=18.78mm

Power LED Charge LED

Specification

Z10 ID Series					
Display	14" 16:10/ 16" 16:10/ 17.3" 16:9, Up to 4K	Left I/O	1*USB Type-A (USB3.2 Gen1 or Gen2)		
CPU	Intel RPL-U/P/H ADL-U/P/H 15W/28W/45W AMD PHX-U/H RMB+ -U/H RMB-U/H 15W/45W		2*Type-C (TBT4 or USB4 option)		
Memory	2*DDR SO-DIMM (xN59 series, 15/28W) or LPDDR onboard (xN39 series, 45W)		1*Standard HDMI 2.0/1.4		
Storage	2*M.2 2280 (PCIe4.0*4/SATA)	Right I/O	14" :	16" :	17.3" :
Camera	1MP/ 2MP, with camera switch		1*Audio	1*Audio	1*Audio
Battery	11.55V/5050mAh, 58Wh (iGPU)		1*USB3.2 Gen1	1*USB3.2 Gen1	1*USB3.2 Gen1
WiFi + BT	M.2 2230 module, WiFi 802.11 ac/ax + BT4.2/5.1		1*RJ45 or USB2.0	1*RJ45 or USB2.0	1*USB2.0
Speaker	2*2W		1*Micro SD	1*SD	1*RJ45
MIC	2*D-MIC	Dimension			1*SD
LED			14": 313.8*222*17.87mm (w/o switch) or 18.1mm (w/ switch)	16": 357.7*245.9*17.9mm	
Key board	US/UK layout, backlit keyboard support	Adapter	45W/ 65W/ 100W PD adapter (Follow CPU)		
OS	Windows 11	Material	Cover A/ D: Aluminum, Cover B/C: Plastic		



六联智能
SIXUNITED

T H A N K S